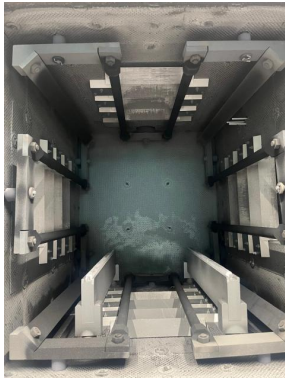


TAV Lot de 2 cellules de traitement thermique automatisées sous vide TPHF 40/45/60 HP

Kind : Oven - Furnace
Manufacturer : TAV
Model : Lot de 2 cellules de traitement thermique automatisées sous vide TPHF 40/45/60 HP
Year : 2012
Serial : 465 - 514
Stock : T16283



Lot de 2 cellules de traitement thermique automatisées sous vide TPHF 40/45/60 HP

TECHNICAL DETAILS

| | |
|---|---------------------------|
| - Useful dimensions | : 400 x 450 x 600 [mm] |
| - Volume of the heating chamber | : 96 [dm ³] |
| - Max. load | : 250 [kg] |
| - Max. temperature | : 1400 [°C] |
| - Max. operating temperature | : 260 - 1350 [°C] |
| - Maximum convection heating temperature | : 750 [°C] |
| - Heating time from 50°C to 1250°C | : 60 [min] |
| - Chamber cooling time from 1200°C to 200°C | : 2 [min] |
| PUMP UNIT | |
| - Mechanical primary pump | : Drystar GV160 |
| * Pumping speed | : 160 [m ³ /h] |
| * Power | : 7.5 [kW] |
| - Roots-type pump | : Edwards EH1200 |
| * Pumping speed | : 500 [m ³ /h] |
| * Power | : 3 [kW] |
| - Diffusion pump | : Edwards HT16B |
| * Pumping speed | : 6.500 [l/s] |
| * Power | : 9 [kW] |
| GAS | |

Kind : Oven - Furnace

Manufacturer : TAV

Model : Lot de 2 cellules de traitement thermique automatisées sous vide TPHF 40/45/60 HP

Year : 2012

Serial : 465 - 514

Stock : T16283

- Cooling gas : Argon or Nitrogen

- Power : 90 [kW]

Water

- Min. / max. pressure (inlet) : 2.5 / 3.0 [bars]

- Min. / max. pressure (outlet) : 0 / 0.5

- Flow rate for heat exchanger during cooling phase : 400 [lpm]

- Furnace chamber flow rate : 200 [lpm]

- Max. inlet temperature : 30 [°C]

- Max. inlet temperature (DP) : 25 [°C]

POWER SUPPLY

- Supply voltage : 400 [V]

- Total installed power : 120 [kVA]

WEIGHT & DIMENSIONS

- Machine floor space : 4.682 x 4.356 [mm]

- Machine height : 3.242 [mm]

- Machine weight : 5000 [kg]

- Vacuum level : 10-5

- Cooling pressure level : 11.5 bar abs

EQUIPMENT

- CNC : Siemens S7

- Robot de chargement automatique

- Centrale de refroidissement

- 100 paniers